

INDEX

Tape

Packing Tape	1
PVC Electrical Tape / PVC Wire Harness Tape	2
Duct Tape	3
Acrylic Tape	4
Foam Tape	4
Protective Tape / Masking Tape	5
Special High Temperature Tape	6
Caution Tape	7
Dry Cargo Hatch Cover Sealing Tape	8

Adhesive

Auto Spare Parts And Hardware

Epoxy Adhesive	9
Auto-parts QH AB Glue	10
High Grade Acetic Gasket Maker	11
Rubber Patch	13

Construction And Decoration

Wood Glue	14
Contact Cement	15
PVC Glue	17
Fixing Foam	18

Daily Necessary

Super Glue Liquid And Gel	19
All Purpose Adhesive	20

PACKING TAPE



No.0761011

No.0761012

No.0761013

No.0761014



Pink

Purple

Orange

Blue

Green



Red

Brown

Yellow

Cyan

Grass Green



Magenta

Black

White

Golden

Silver

PVC ELECTRICAL TAPE / PVC WIRE HARNESS TAPE

PVC ELECTRICAL TAPE



Item No.	Materials	Thickness (mm)	Adhesive Force (N/cm)	Temperature Tolerance	Peculiarity
0761101	PVC	0.085	≥1.3	85°C	Solvent-based rubber coating High temperature resistance Excellent low temperature resistance Flame retardant
0761102	PVC	0.103	≥1.3	85°C	
0761103	PVC	0.112	≥1.6	105°C	
0761104	PVC	0.125	≥1.6	125°C	
0761105	PVC	0.090	≥1.0	85°C	Reach SVHC ROHS 2.0
0761106	PVC	0.100	≥1.0	85°C	
0761111	PVC	0.125	≥1.6	85°C	
0761112	PVC	0.100	≥1.0	85°C	
0761113	PVC	0.105	≥1.3	85°C	
0761114	PVC	0.125	≥1.5	105°C	
0761115	PVC	0.125	≥1.5	125°C	

PVC WIRE HARNESS TAPE WATER BASE TYPE



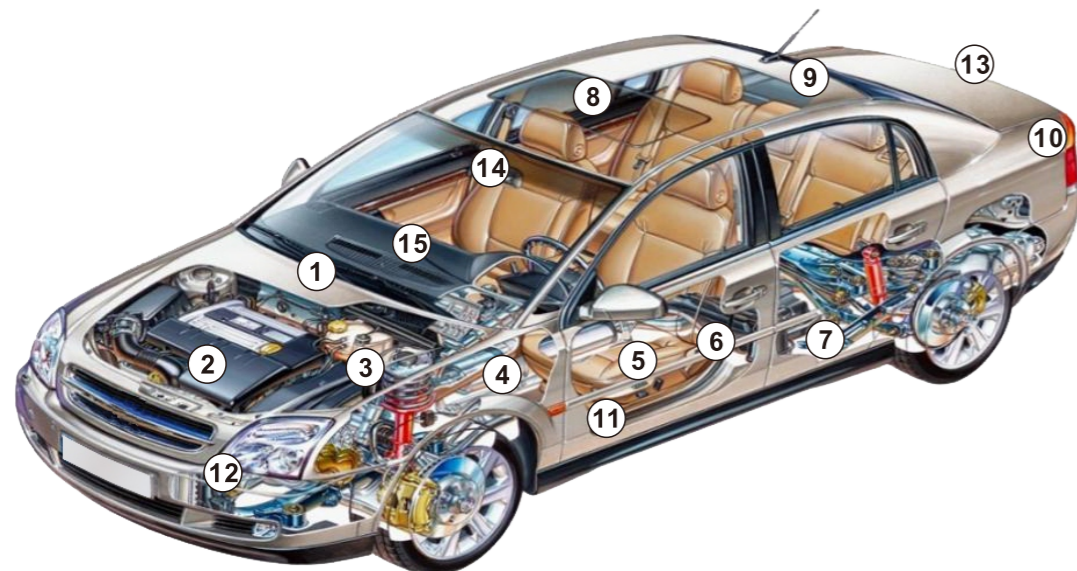
Item No.	Materials	Thickness (mm)	Adhesive Force (N/cm)	Temperature Tolerance	Peculiarity	Usage Scenario
0761121	PVC	0.100	≥1.0	85°C	Reach ROHS Soft and flexible, It has good operability in the use of automobile wiring harness Inflammable Low odor Low atomization And low VOCs	Car, locomotive body
0761122	PVC	0.100	≥1.0	85°C		
0761123	PVC	0.100	≥1.0	85°C		Engine compartment harness winding
0761124	PVC	0.100	≥1.0	105°C		
0761125	PVC	0.090	≥1.0	105°C		
0761126	PVC	0.125	≥1.0	105°C		
0761127	PVC	0.125	≥1.0	125°C		
0761128	PVC	0.110	≥1.0	125°C		

DUCT TAPE

DUCT TAPE



Item No.	Materials	Thickness (mm)	Adhesive Force (N/cm)	Temperature Tolerance	Peculiarity	Usage Scenario
0761151	Wool-polyester	0.280	≥3.0	105°C	Low odor, low atomization and low VOCs Inflammable Easy to tear Reach ROHS	Wiring harness in the car cabin
0761152	Polyester	0.200	≥3.5	105°C		
0761156	Polyester	0.230	≥3.5	105°C		
0761161	Wool-polyester	0.280	≥3.0	125°C	Low VOCs Easy to tear High temperature resistance Reach ROHS	Used in automotive engine area to withstand high temperature wire harness winding
0761162	Polyester	0.200	≥3.5	125°C		
0761171	Wool-polyester	0.280	≥3.0	105°C	Low odor, low atomization and low VOCs Inflammable Reach ROHS	Car, locomotive body
0761172	Polyester	0.200	≥3.5	105°C		
0761176	Polyester	0.230	≥3.0	105°C		
0761181	Polyester	0.150	≥1.55	125°C	Ultrathin	Car, locomotive body
0761182	Lint cloth	0.350	≥1.20	125°C	Easy to tear and flokkit	
0761183	Lint cloth	0.200	≥1.55	125°C	Easy to tear and flokkit	
0761191	Polyester	0.230	≥2.05	150°C	Easy to tear and high temperature resistance	Used in automotive engine area to withstand high temperature wire harness winding
0761192	Flame retardant wool-polyester	0.350	≥1.20	125°C	Easy to tear and flame retardant	
0761193	Polyester	0.200	≥2.05	150°C	Easy to tear and high temperature resistance	
0761194	Polyester	0.130	≥2.05	125°C	Easy to tear and high temperature resistance	
0761196	Polyester	0.230	≥1.6	150°C	Wear-resistant class D	



1. INSTRUMENT PANEL(IP)
2. ENGINE
3. BATTERY CABLE
4. SPEED BRAKE
5. DOOR
6. DOOR SWITCH
7. BODY/FLOOR
8. SUNROOF/MOONROOF
9. CHMSL HARNESS/SPOILER
10. REAR LAMP
11. PUDDLE
12. HEAD LAMP
13. LICENSE LAMP
14. ROOM LAMP
15. CONSOLE
16. NEW ENERGY VEHICLE WIRING HARNESS

ACRYLIC TAPE / FOAM TAPE

ACRYLIC TAPE



Item No.	Materials	Thickness (mm)	Colour	Peculiarity	Usage Scenario
0761201	Acrylic	0.25	The color of the colloid are gray, black, white, transparent	Waterproof and shock-absorbing Sound insulation and noise reduction Transparent and invisible High and low temperature resistance Super adhesive	Locomotive trim bonding Glass curtain wall bonding electrical parts bonding Household goods bonding
0761202	Acrylic	0.4			
0761203	Acrylic	0.5			
0761204	Acrylic	0.8			
0761205	Acrylic	1.0			
0761206	Acrylic	1.2			
0761207	Acrylic	2.0			
0761208	Acrylic	3.0			

FOAM TAPE



Item No.	Materials	Thickness (mm)	Adhesive Force (kg/cm)	Elongation at break (%)	Tensile strength (kg/cm)	Temperature Tolerance	Peculiarity	Usage Scenario
0761251	PE foam(Black)	0.5	≥0.8	300↑	0.8↑	80°C	5x foaming high adhesion Resistance to moisture, acid and alkali	Furniture Car trim The wave board Wheel arc Rain window Shock-proof Leak proof Fixed use
0761252	PE foam(Black)	0.8	≥0.8	300↑	1.2↑	80°C	10x foaming high adhesion Resistance to moisture, acid and alkali	
0761253	PE foam(Black)	0.8	≥0.8	300↑	1.2↑	80°C	8x foaming high adhesion Resistance to moisture, acid and alkali	
0761254	PE foam(White)	0.8	≥0.8	300↑	1.2↑	80°C	10x foaming high adhesion Resistance to moisture, acid and alkali	
0761255	PE foam(White)	1	≥0.8	200↑	0.6↑	80°C	15x foaming high adhesion Resistance to moisture, acid and alkali	
0761256	PE foam(Black)	1	≥0.8	200↑	0.6↑	80°C	15x foaming high adhesion Resistance to moisture, acid and alkali	
0761257	PE foam(White)	1.5	≥0.8	300↑	1.2↑	80°C	15x foaming high adhesion Resistance to moisture, acid and alkali	
0761258	PE foam(Black)	1.5	≥0.8	300↑	1.2↑	80°C	15x foaming high adhesion Resistance to moisture, acid and alkali	
0761259	PE foam(Black)	2	≥0.8	200↑	1.5↑	80°C	10x foaming high adhesion Resistance to moisture, acid and alkali	
0761260	PE foam(Black)	2	≥0.8	200↑	1.5↑	80°C	15x foaming high adhesion Resistance to moisture, acid and alkali	
0761261	PE foam(White)	2	≥0.8	200↑	1.5↑	80°C	15x foaming high adhesion Resistance to moisture, acid and alkali	
0761262	PE foam(White)	3	≥0.8	200↑	1.6↑	80°C	15x foaming high adhesion Resistance to moisture, acid and alkali	

PROTECTIVE TAPE / MASKING TAPE

PE/PVC PROTECTIVE TAPE



Item No.	Materials	Thickness (mm)	Adhesive Force (kg/25mm)	Peculiarity	Usage Scenario
0761301	PVC	0.100	0.070-0.120	Easy to tear Easy peel Non-residual gum Solvent resistance Sun resistance	Paint protection Panel protection Profile protection Furniture protection Plating protection
0761302	PVC	0.100	0.150-0.200		
0761303	PE	0.070	0.100		
0761304	PE	0.080	0.100		
0761305	PE	0.100	0.250		

MASKING TAPE



Item No.	Materials	Thickness (mm)	Adhesive Force (N/cm)	Temperature Tolerance	Usage Scenario
0761351	Masking paper	0.140	≥0.28	60°C/1hrs	Packaging sealing, coating shielding
0761352	Masking paper	0.150	≥0.4	93° C/1hrs	Paint shielding of car repair and plastic casing
0761353	Masking paper	0.180	≥0.32	154° C/1hrs	High temperature paint application, new car and personal computer main casing spray paint shield
0761354	Masking paper	0.180	≥0.32	154° C/3hrs	High temperature paint application, new car and personal computer main casing spray paint shield
0761355	PVC	0.120	≥0.16	150° C/1hrs	High temperature paint application, new car and personal computer main casing spray paint shield

SPECIAL HIGH TEMPERATURE TAPE

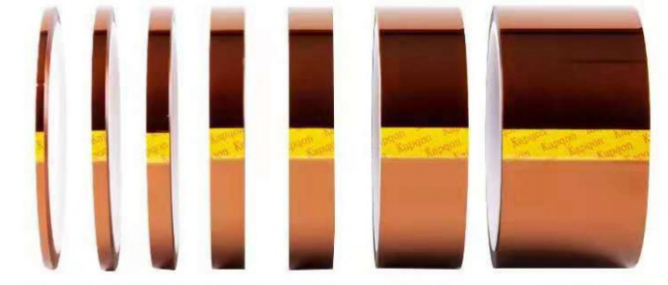
TEFLON TAPE

Uses: hot pressing sealing, end protection, mechanical anti-sticking, strong acid plating protection, etc.
 Characteristics: -190°C-400°C limit temperature difference performance is stable, smooth wear resistance is not easy to adhesive, acid, alkali, corrosion resistance, insulation flame retardant non-toxic.
 Item No.0761401-0761450



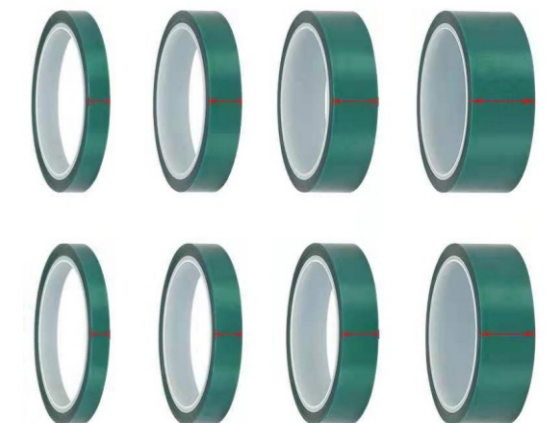
GOLD FINGER HIGH TEMPERATURE TAPE (POLYIMIDE)

Uses :SMT industry peak candle and reflow protection finger, high temperature paint coating shielding, electronic parts process fixing, flexible printed circuit board high temperature treatment shielding, lithium battery heat insulation, transformer insulation, etc
 Features: Environmental resistance to 300°C high temperature, acid and alkali resistance to corrosion, high viscosity, easy to peel and no residual glue, easy to punch die cutting processing.
 Item No.0761451-0761499



PET HIGH TEMPERATURE SILICONE TAPE (POLYURETHANE)

Uses: high temperature heat insulation, motor insulation, PCB plating and spraying shielding protection.
 Features: Environmental resistance to 200°C high temperature, acid and alkali resistance to corrosion, high viscosity, easy to peel and no residual glue, easy to punch die cutting processing.
 Item No.0761501-0761550



CAUTION TAPE

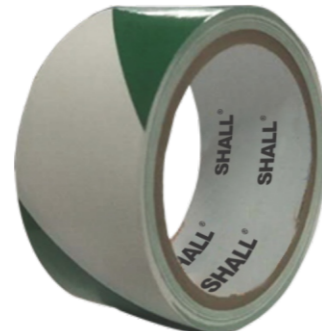
Marked warning area
 Split hazard warning
 Label location classification
 Item No.0761601-0761699



Yellow & Black



Red & White



Green & White



Yellow



Red



Blue



Green

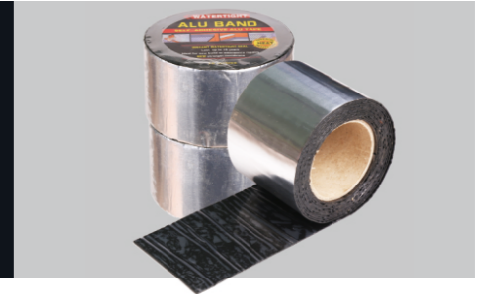


White

DRY CARGO HATCH COVER SEALING TAPE

**DRY CARGO HD HEAVY DUTY HATCH SEALING TAPE
 FOR ALL WEATHERS TAPE/BAND**

- Good international availability
- Simple, quick and easy to apply
- 100mm/4", 150mm/6", widths 75mm/3"
- Item No.0761701-0761799



DRY CARGO HD is a internationally recognised and accepted heavy-duty hatch sealing tape which was introduced in the early 1970s.

It consists of 20 metre rolls of bitumen compound coated onto polythene film and interleaved with release paper.

DRY CARGO HD is self-adhesive and provides excellent strength and flexibility for all-weather operations.

According to rules and regulations, metal hatch covers on cargo vessels are expected to be water-tight without the aid of further appliances. In practice hatch joints can leak for a number of reasons with resulting cargo damage.

As a safe guard and as an exercise in good housekeeping, many shipowners around the world carry hatch sealing tape on their ships.

DRY CARGO HD was purpose-produced as an all-weather hatch sealer with proven results since its introduction in the early 1970s.



METHOD OF USE

1. The joint should be brushed clean of any loose scale, paint, dirt and surface water.
2. The section of tape is unrolled along the joint, and the interleaving paper removed.
3. The adhesive surface is pressed over the joint, and the tape firmly pressed into place using firm foot pressure.
4. To remove, simply scrape off.
5. In cold conditions the tape should be stored in a heated area until immediately before use.
6. In very cold conditions the tape may be lightly heated before being turned over and pressed into position along the joint.

PRODUCT DATA

Temperature range
 Application: From 5°C*to 35°C*
 Service: From -5°C*to 65°C*
 (*see method of use in cold/very cold conditions)
 Packing: 100mm/4" width-3 X 20mtr rolls per ctn
 150mm/6" width-2 x 20mtr rolls per ctn
 Carton Spec: (All widths)20kg-320X 320 X320mm
 DRY CARGO SD
 For situations where a lighter-grade tape is adequate
 100mm/4" width -3 X20 metre rolls per carton
 150mm/6" width -2 X20 metre rolls per carton
 A full specification is available on request.

EPOXY ADHESIVE



ITEM
0771010
SOLIDIFYING TIME
3-5mins
SPECIFICATION
20g/set, 12sets/inner,
12inners/ctn
MEAS
36X30.5X44.5cm



ITEM
0771020
SOLIDIFYING TIME
3-5mins
SPECIFICATION
24ml/set, 12sets/inner,
12inners/ctn
MEAS
42.2X37.3X48.5cm



ITEM
0771030
SOLIDIFYING TIME
3-5mins
SPECIFICATION
30g/set, 12sets/inner,
12inners/ctn
MEAS
43.5X32.5X44.5cm



ITEM
0771040
SOLIDIFYING TIME
3-5mins
SPECIFICATION
57g/set, 12sets/inner,
12inners/ctn
MEAS
43.5X32.5X44.5cm



ITEM
0771050
SOLIDIFYING TIME
5-10mins
SPECIFICATION
28g/set, 12sets/inner,
12inners/ctn
MEAS
43.5X32.5X44.5cm



ITEM
0771060
SOLIDIFYING TIME
5-8mins
SPECIFICATION
56g/set, 12sets/inner,
12inners/ctn
MEAS
43.5X32.5X44.5cm



ITEM
0771070
SOLIDIFYING TIME
5-10mins
SPECIFICATION
30g/set, 12sets/inner,
12inners/ctn
MEAS
43.5X32.5X44.5cm



ITEM
0771080
SOLIDIFYING TIME
20-25mins
SPECIFICATION
30g/set, 12sets/inner,
12inners/ctn
MEAS
43.5X32.5X44.5cm

AUTO-PARTS QH AB GLUE

Main Component

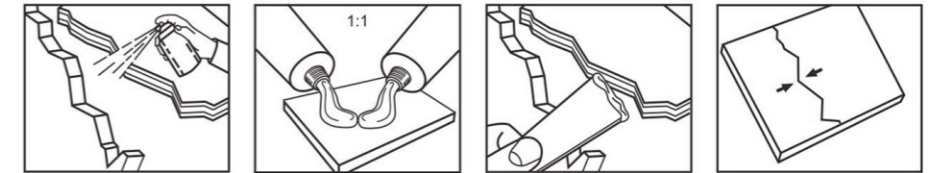
A component is the modified Acrylic ester, the B is modified Curing Agent.

Scope Of Application

Quick adhesive, repairing and sealing for iron, steel, aluminium, stainless steel, ABS plastics, pvc material, polystyrene, glasses and acrylic etc or special material. House commodities' repairing and sealing for car, motorcycle, tractor, and all kinds of components of machines.

Storage And Packing

- 1.Keep cool under 20°C, keep dry, seal, valid within 12 months.
- 2.Preserve and transport as non dangerous products.



Technical Feature

Name Of Product	Appearance	Applying temperature (°C)	Curing time (25°C,min)	Shear strength (Steel-Steel, MPa)
Auto-parts glue	Component A is light blue thick liquid. Component B is light red thick liquid.	-30~100	≤10	≥10MPa



ITEM
0771090
FIRST SOLIDIFYING TIME
≤ 10 mins
SPECIFICATION
20g/box, 100boxes/ctn
MEAS
12X21.5X43cm



ITEM
0771100
FIRST SOLIDIFYING TIME
≤ 10 mins
SPECIFICATION
80g/box, 100boxes/ctn
MEAS
28.5X61.5X14cm



ITEM
0771110
FIRST SOLIDIFYING TIME
≤ 10 mins
SPECIFICATION
20g/card, 20cards/box, 20boxes/ctn
MEAS
68X38.3X33cm



ITEM
0771120
FIRST SOLIDIFYING TIME
≤ 10 mins
SPECIFICATION
30g/set, 12sets/inner, 12inners/ctn
MEAS
43.5X32.5X44.5cm

HIGH GRADE ACETIC GASKET MAKER

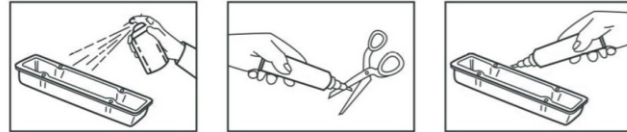
Main Component
Silicone

Scope Of Application

RTV (Room temperature vulcanizing) silicone forms replacements for cork, paper, asbestos and felt pre-cut gasket. This RTV silicone can also provide sealing for windshields, sunroofs, doors, lights hose connection and more. This silicone dries tough and remains flexible can be used on oil pans, rear end housing, water pumps, valve covers, thermostat housing.

Storage And Packing

1. This product is non-flammable, seal store in 10-27°C cool dry place.
2. The shelf life for top grade acetic gasket maker is 12 months from date of production.



Technical Feature

No.	Item	Technical Parameter	
		Top grade	
1	Appearance	Uniform delicate cream, without crust, gel, caking, no bubbles, no easily dispersed precipitates	
2	Prolapse Distance	Vertical, mm	≤3
		Acclinic	No distortion
3	Density	0.93-0.98	
4	Extrusion, ml/min	≥400	
5	Surface Dry Time, min	5-15	
6	Shore A(HSA)	20-30	
7	23°C Standard extend	≥0.4	
8	Bonding destroy area under standard condition %	≤5	
9	Elastic recover rate%	≥80	
10	Extend bond rate under standard condition	100% no damage	
11	Solidify speed mm/24h	3-8	
12	Leakage rate	≤2	
13	Using temperature	-40~240°C	

HIGH GRADE ACETIC GASKET MAKER



ITEM 0771200
SPECIFICATION 85g/set, 12sets/inner, 12inners/ctn
MEAS 67.3X42.8X28.9cm

ITEM 0771210
SPECIFICATION 85g/set, 12sets/inner, 12inners/ctn
MEAS 67.3X42.8X28.9cm

ITEM 0771220
SPECIFICATION 85g/set, 12sets/inner, 12inners/ctn
MEAS 67.3X42.8X28.9cm

ITEM 0771230
SPECIFICATION 85g/set, 12sets/inner, 12inners/ctn
MEAS 67.3X42.8X28.9cm

ITEM 0771240
SPECIFICATION 85g/set, 12sets/inner, 12inners/ctn
MEAS 67.3X42.8X28.9cm

Technical Feature

Type	Curing time(s)	Dynamic Viscosity (20°C, mPa.s)	Tensthe-shear strength (60°C×3h, MPa)
Super glue	≤25	30-40	≥8



ITEM 0771150
SPECIFICATION 45g/set, 12sets/inner, 12inners/ctn
MEAS 53.8X42.8X28.9cm

ITEM 0771160
SPECIFICATION 45g/set, 12sets/inner, 12inners/ctn
MEAS 53.8X42.8X28.9cm

ITEM 0771170
SPECIFICATION 45g/set, 12sets/inner, 12inners/ctn
MEAS 53.8X42.8X28.9cm

ITEM 0771180
SPECIFICATION 45g/set, 12sets/inner, 12inners/ctn
MEAS 53.8X42.8X28.9cm

ITEM 0771190
SPECIFICATION 45g/set, 12sets/inner, 12inners/ctn
MEAS 53.8X42.8X28.9cm



ITEM 0771250
SPECIFICATION 85g+3g/set, 12sets/inner, 12inners/ctn
MEAS 67.3X42.8X30.9cm

ITEM 0771260
SPECIFICATION 85g+3g/set, 12sets/inner, 12inners/ctn
MEAS 67.3X42.8X30.9cm

ITEM 0771270
SPECIFICATION 85g+3g/set, 12sets/inner, 12inners/ctn
MEAS 67.3X42.8X30.9cm

ITEM 0771280
SPECIFICATION 85g+3g/set, 12sets/inner, 12inners/ctn
MEAS 67.3X42.8X30.9cm

ITEM 0771290
SPECIFICATION 85g+3g/set, 12sets/inner, 12inners/ctn
MEAS 67.3X42.8X30.9cm

RUBBER PATCH

Capability & Function

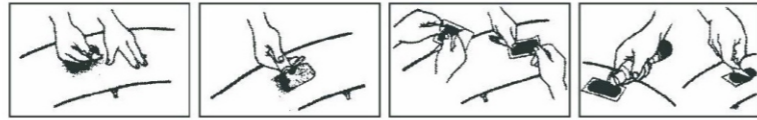
Circular cold mending adhesive patch for inner tube, Can repair circular injure in inner tube. The circular cold patch is made up by two parts: half sulfuration touch part and whole sulfuration fortified part. By using the rubber solution for inner tube, the circular cold patch could finish the sulfuration process with- out heating, so the patch and the inner tube become one whole part.

Application

It is mainly used to repair the tires of the bicycles, motorcycles and cars.

Storage And Packing

1. Ship according to normal chemical product.
2. Store in shady and cool place, the shelf life is 12 months.



ITEM: 0771300
SPECIFICATION: 12pc/box,
10boxes/bag, 20bags/ctn
MEAS: 67.5X30.6X26.5cm



ITEM: 0771310
SPECIFICATION: 24pc/box,
10boxes/bag, 20bags/ctn
MEAS: 67.5X30.6X26.5cm



ITEM: 0771320
SPECIFICATION: 48pc/box,
10boxes/bag, 20bags/ctn
MEAS: 67.5X30.6X26.5cm



ITEM: 0771330
SPECIFICATION: 15g/pc, 12pcs/box,
12boxes/packing, 8packings/ctn
MEAS: 50X46X28.5cm

WOOD GLUE

Main Component

Polyvinyl acetate emulsion unit, water, filler.

laminati- on even emulsion breaking, then cannot continue to use.

Storage And Packing

1. The product should be stored at temperature 5~37°C in sealed non-metal container, prevent from freeze and high temperature. The shelf life is 12 months from the date of production. It is available to use based on passing of the test if being beyond the shelf life.
2. If the glue slightly freezes, place in 30~40°C greenho- uses the full alleviation, and stirs evenly, does not affect the use. If the glue long time receives seriously freezes, cannot alleviate, appears agglomerates, the



Technical Feature

Commodity	Item	Appearance	PH	Viscosity (25°C) , mPa.s	Shear Strength, MPa	Solid content(%)
20% Solid content	SK-221	Milk white Mucus, no obvious granule	4-6	15000-25000	≥ 4	20±2
25% Solid content	SK-2072		4-6	15000-25000	≥ 4	25±2
30% Solid content	SK-2073		4-6	15000-25000	≥ 4	30±2
40% Solid content	SK-2074		4-5	15000-25000	≥ 4	40±2
50% Solid content	SK-2075		4-5	15000-25000	≥ 5	50±2



ITEM 0772030
SPECIFICATION 500g/pc, 24pcs/ctn.
MEAS 54X37X13cm



ITEM 0772040
SPECIFICATION 250g/pc, 48pcs/ctn.
MEAS 44X30X19cm



ITEM 0772050
SPECIFICATION 1kg/pc, 12pcs/ctn.
MEAS 39X29.5X17cm



ITEM 0772060
SPECIFICATION 100g/pc, 12pcs/inner, 6inners/ctn.
MEAS 38X17.5X36.5cm



ITEM 0772070
SPECIFICATION 40g/card, 12cards/inner, 12inners/ctn.
MEAS 42X32.5X39.5cm



ITEM 0772080
SPECIFICATION 25kg/pc, 1pc/ctn.
MEAS 33X33X39cm



ITEM 0772090
SPECIFICATION 20kg/pc



ITEM 0772100
SPECIFICATION 10kg/pc, 2pc/ctn.
MEAS 55.7X27.8X29.5cm



ITEM 0772110
SPECIFICATION 5kg/pc, 4pcs/ctn.
MEAS 39X33X26.5cm

CONTACT CEMENT

Main Component
 Neoprene

Scope Of Application

This product is mainly used in architecture, decoration, furniture, as well as the bond of aluminum board, fireproof board, man-made board, rubber, leather, etc.

Storage And Packing

1. Stock the products in the air-tight seal at the temperature of 10-35°C.
2. The shelf life is 12 months. It is available to use based on passing of the test if being beyond the shelf life.
3. Preserve and transport as flammable products.



Technical Feature

Name Of Product	Appearance	Viscosity (25°C, mPa.S)	Solid Content (%)	Peel Strength (25°Cx48h, canvas-canvas N/2.5cm)
Contact Cement (303)	Light yellow thick liquid	2000-4000	≥20	≥60
Contact Cement (305)	Light yellow thick liquid	1500-2500	≥17	≥40
Contact Cement (Environmental-3062)	Light yellow thick liquid	1000-2500	≥22	≥60



ITEM 0772120
GLUE TYPE 303
SPECIFICATION 1L/tin, 12tins/ctn
MEAS 34X23X29.5cm

ITEM 0772130
GLUE TYPE 303
SPECIFICATION 3L/tin, 6tins/ctn
MEAS 35X28X28.5cm

ITEM 0772140
GLUE TYPE 303
SPECIFICATION 4L/tin, 4tins/ctn
MEAS 35X22.5X28.2cm

ITEM 0772150
GLUE TYPE 303
SPECIFICATION 18L/tin, 1tin/ctn
MEAS 24.8X24.8X37.7cm

CONTACT CEMENT



ITEM 0772160
GLUE TYPE 305
SPECIFICATION 50ml/pc, 25pcs/bag, 8bags/ctn
MEAS 36X31X29.5cm



ITEM 0772170
GLUE TYPE 305
SPECIFICATION 125ml/pc, 25pcs/bag, 4bags/ctn
MEAS 48.5X42X22.5cm



ITEM 0772180
GLUE TYPE 305
SPECIFICATION 250ml/tin, 48tins/ctn
MEAS 31.7X24.1X30cm



ITEM 0772190
GLUE TYPE 305
SPECIFICATION 500ml/tin, 12tins/ctn
MEAS 34X23X20cm



ITEM 0772200
GLUE TYPE 305
SPECIFICATION 125ml/tin, 120tins/ctn
MEAS 41.5X35X25cm



ITEM 0772210
GLUE TYPE 305
SPECIFICATION 3L/tin, 6tins/ctn
MEAS 35X28X28.5cm



ITEM 0772220
GLUE TYPE 305
SPECIFICATION 1l/tin, 12tins/ctn
MEAS 34X23X29.5cm



ITEM 0772230
GLUE TYPE 305
SPECIFICATION 750ml/tin, 12tins/ctn
MEAS 34X23X25.5cm

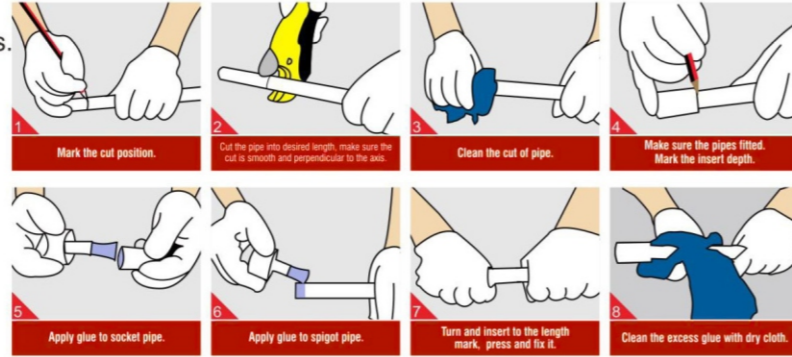
PVC GLUE

Scope Of Application

This PVC glue can be used for PVC, UPVC, CPVC pipes. It is suitable for the cementation of hard PVC drainpipe, the sewage pipe (including the UPVC pipe and the CPVC pipe) and the pipe fitting.

Storage And Packing

1. Stock the products in cool and dry place. The shelf life is 12 months. It is available to use based on passing of the test if being beyond the shelf life.
2. Preserve and transport as flammable products.



Technical Feature

Name Of Product	Appearance	Viscosity (25°C, mPa.S)	Solid Content (%)	Peel Strength (25°Cx48h, pvc pipe - pvc pipe, MPa.)
PVC GLUE (322)	Light yellow or semi-transparent thick liquid	1000-2500	≥15	≥6.5
PVC Glue (Environmental-3231)	Light yellow or semi-transparent thick liquid	200-600	≥20	≥3.4
PVC Glue (Environmental-3232)	Transparent thick liquid	100-500	≥15	≥6.5
PVC Glue (3233)	Transparent thick liquid	12000-15000	≥20	≥3.4



ITEM 0772270
SPECIFICATION 1L/tin, 12tins/ctn
MEAS 44.2X33.4X16.5cm



ITEM 0772280
SPECIFICATION 500ml/tin, 24tins/ctn
MEAS 41.8X31.8X27cm



ITEM 0772290
SPECIFICATION 250ml/tin, 48tins/ctn
MEAS 41.5X28X24cm



ITEM 0772300
SPECIFICATION 125ml/tin, 48tins/ctn
MEAS 41.5X28X17.1cm

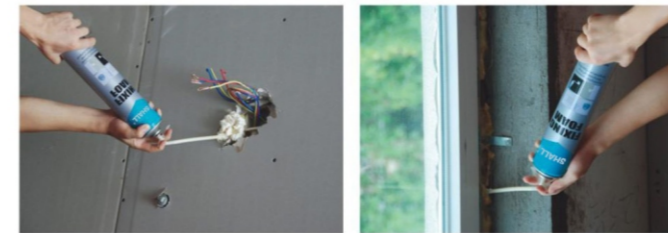
FIXING FOAM

Scope Of Application

Installing, fixing and insulating of door and window frames;
 Filling and sealing of gaps, joint, openings and cavities;
 Connecting of insulation materials and roof construction;
 Bonding and mounting;
 Insulating the electrical outlets and water pipes;
 Heat preservation, cold and sound insulation;
 Packaging purpose, wrap the precious & fragile commodity, shake-proof and anti-pressure.

Storage And Packing

1. Store in temperature between +5°C to +25°C, Keep in cool, shade and well ventilated area. Make sure the valve stand upward.
2. 750ml/can, 500ml/can, 12pcs/ctn, Straw type and Gun type.



Technical Feature

Item	Parameter
Base	Polyurethane
Consistency	Stable Foam
Curing System	Moisture-cure
Tack-Free Time (min)	7-15
Drying Time	Dust-free after 20-25 min
Cutting Time (hour)	1-1.5 (+25°C), 2-3 (-25°C)
Yield (L)	35-40
Shrink	None
Post Expansion	None
Cellular Structure	60-65% open cells
Specific Gravity (kg/m³)	16-20
Temperature Resistance	40°C~+80°C
Application Temperature Range	+5°C~+35°C
Colour	Champagne
Fire Class (DIN 4102)	B3
Insulation Factor (Mw/m.k)	<36
Compressive Strength (kPa)	>100
Tensile Strength (kPa)	>28 (10%)
Adhesive Strength(kPa)	>75
Water Absorption (ML)	0.5-2(no epidermis) <0.5(with epidermis)



ITEM 0772400
SPECIFICATION 500ml/pc, 12pcs/ctn
MEAS 28X21X25.5cm



ITEM 0772410
SPECIFICATION 750ml/pc, 12pcs/ctn
MEAS 28X21X36cm



ITEM 0772410(GUN)
SPECIFICATION 750ml/pc, 12pcs/ctn
MEAS 28X21X34cm

SUPER GLUE LIQUID AND GEL

Main Component

Ethyl-Cyanoacrylate

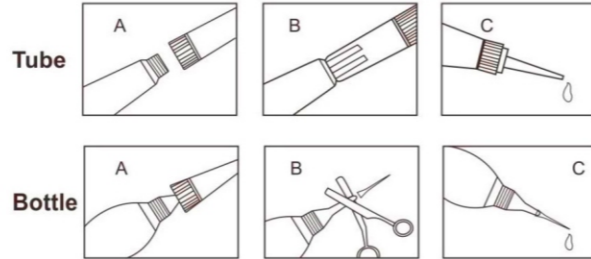
Scope Of Application

This product could be applied to bond of metal, rubber, plastic, wood, pottery in the fields of daily household repairing, arts making and repairing, apparatus first orienting etc.

Storage And Packing

1.The product is non-flammable. Keep dry and out of light, low temperature (20-25°C) during storage.

2. The shelf life is 12 months. If the glue does not solidifying beyond the shelf life, it could be used still. But the solidifying speed and adhesive intensity would be affected in some degree.



Technical Feature

Type	Appearance	Curing time(s)	Dynamic Viscosity (20°C, mPa.s)	Tensthe-shear strength (60°C×3h, MPa)
Super glue	Transparent or Light yellow liquid	≤25	30~40	≥8
Power glue		≤20	20~40	≥12
Crazy glue		≤20	20~40	≥14
Gel	Transparent Gel	≤20	Gel	≥12



ITEM 0773050
GLUE TYPE SUPER GLUE
SPECIFICATION 3g/pc, 1pc/card, 12cards/inner, 12inners/ctn.
MEAS 33.5X23X38.5cm



ITEM 0773060
GLUE TYPE POWER GLUE
SPECIFICATION 3g/pc, 3pc/card, 12cards/inner, 12inners/ctn.
MEAS 46.5X39X31cm



ITEM 0773010
GLUE TYPE CRAZY GLUE
SPECIFICATION 10g/pc, 1pc/card, 12cards/inner, 12inners/ctn.
MEAS 35X30.5X38.5cm



ITEM 0773020
GLUE TYPE GEL GLUE
SPECIFICATION 3g/pc, 2pcs/card, 24cards/inner, 12inners/ctn.
MEAS 66X24X43.5cm



ITEM 0773030
GLUE TYPE POWER GLUE
SPECIFICATION 3g/pc, 1pc/card, 12cards/inner, 12inners/ctn.
MEAS 33.5X23X38.5cm



ITEM 0773040
GLUE TYPE POWER GLUE
SPECIFICATION 10g/pc, 1pc/card, 12cards/inner, 12inners/ctn.
MEAS 35X30.5X38.5cm



ITEM 0773100
GLUE TYPE POWER GLUE
SPECIFICATION 3g/pc, 12pcs/card, 50cards/ctn.
MEAS 42X13X58.5cm



ITEM 0773110
GLUE TYPE SUPER GLUE
SPECIFICATION 3g/pc, 12pcs/card, 50cards/ctn.
MEAS 42X13X58.5cm



ITEM 0773070
GLUE TYPE POWER GLUE
SPECIFICATION 3g/pc, 12pcs/card, 24cards/ctn.
MEAS 37.5X18.5X24.5cm



ITEM 0773080
GLUE TYPE POWER GLUE
SPECIFICATION 4g/pc, 12pcs/card, 40cards/ctn.
MEAS 42X40X24cm



ITEM 0773090
GLUE TYPE SUPER GLUE
SPECIFICATION 3g/pc, 12pcs/card, 24cards/ctn.
MEAS 37.5X18.5X24.5cm

ALL PURPOSE ADHESIVE

Scope Of Application

This product is used to bond all kinds of hard and soft material, such as: glass, metal, porcelain, plastic film, phenolic foam, polystyrene foam, natural rubber, wood, leather, synthetic leather, fur, yew, decoration wooden line, paper, cardboard, carpet, craft work, etc.

Storage And Packing

1.Stock the products in cool and dry place. The shelf life is 12 months. It is available to use based on passing of the test if being beyond the shelf life.

2.Preserve and transport as flammable products.
 3.Packing: 20ml/color box, 33ml/color box, 25kg/barr-el in plastic barrel.



Technical Feature

Name Of Product	Appearance	Viscosity (25°C, mPa.S)	Solid content (%)	Tensile Shear Strength (Wood-Wood, MPa)	Peel Strength (25°Cx48h, canvas-canvas N/2.5cm)
All purpose adhesive	Transparent thick liquid	4000-8000	≥40	≥2	≥40



ITEM 0773240
SPECIFICATION 20ml/pc, 25pcs/bag, 8bags/ctn
MEAS 29X27X24.5cm



ITEM 0773250
SPECIFICATION 33ml/pc, 25pcs/bag, 8bags/ctn
MEAS 35.5X27.5X31.5cm



ITEM 0773260
SPECIFICATION 50ml/card, 12cards/inner, 12inners/ctn
MEAS 39X37.5X44.5cm



ITEM 0773270
SPECIFICATION 5ml/pc, 10pcs/card, 24cards/inner, 4inners/ctn
MEAS 43.5X39.5X27cm